



JMLA Silber - Tonleitern

Trompete / Flügelhorn (fis - b²)

portato, legato, staccato

♩ = 108

E - Dur



H - Dur



Fis - Dur



Cis - Dur



As - Dur



JMLA Silber - Tonleitern

Trompete / Flügelhorn (fis - b²)

portato, legato, staccato



NIEDERÖSTERREICHISCHER
BLASMUSIKVERBAND

♩ = 108

Des - Dur



Ges - Dur



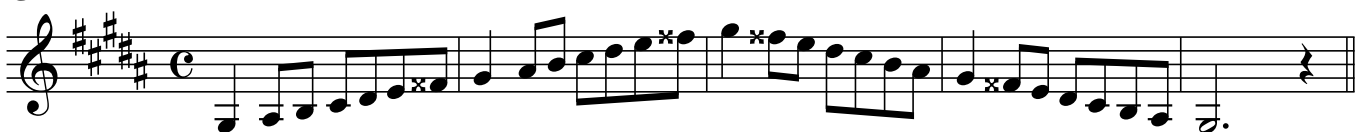
Ces - Dur



cis - Moll



gis - Moll





JMLA Silber - Tonleitern

Trompete / Flügelhorn (fis - b²)

portato, legato, staccato

♩ = 108

gis - Moll

dis - Moll

ais - Moll

JMLA Silber - Tonleitern

Trompete / Flügelhorn (fis - b²)

portato, legato, staccato



NIEDERÖSTERREICHISCHER
BLASMUSIKVERBAND

♩ = 108

f - Moll

Two staves of musical notation for the f - Moll scale. The first staff shows the ascending scale from F2 to F3. The second staff shows the descending scale from F3 to F2, with a repeat sign at the end.

b - Moll

Three staves of musical notation for the b - Moll scale. The first staff shows the ascending scale from Bb2 to Bb3. The second staff shows the descending scale from Bb3 to Bb2. The third staff shows a second ascending scale from Bb2 to Bb3.

es - Moll

Two staves of musical notation for the es - Moll scale. The first staff shows the ascending scale from E2 to E3. The second staff shows the descending scale from E3 to E2, with a repeat sign at the end.

JMLA Silber - Tonleitern

Trompete / Flügelhorn (fis - b²)

portato, legato, staccato



NIEDERÖSTERREICHISCHER
BLASMUSIKVERBAND

♩ = 108

as - Moll

Three staves of musical notation for the 'as - Moll' section. The first staff begins with a treble clef, a key signature of two flats (B-flat and E-flat), and a common time signature. The music consists of eighth and sixteenth notes, with some accidentals. The second and third staves continue the melodic line, with the third staff ending with a double bar line.

chromatische Skala

Two staves of musical notation for the 'chromatische Skala' section. The first staff shows an ascending chromatic scale starting from G4, with sharp signs indicating the natural notes. The second staff shows a descending chromatic scale from G4 down to B3, with flat signs indicating the natural notes. The music is in G minor and 4/4 time.