



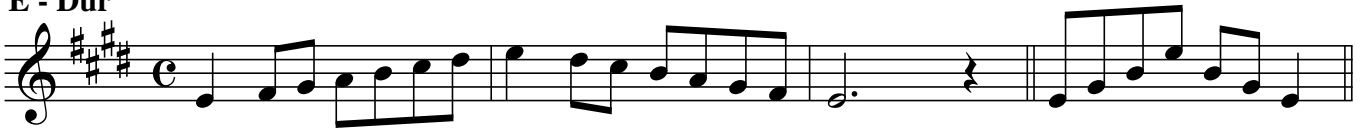
# JMLA Silber - Tonleitern

## Tenorhorn (fis - b<sup>2</sup>)

portato, legato, staccato

♩ = 108

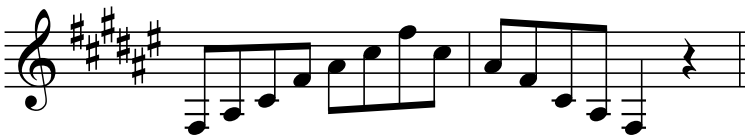
E - Dur



H - Dur



Fis - Dur



Cis - Dur



As - Dur





# JMLA Silber - Tonleitern

## Tenorhorn (fis - b<sup>2</sup>)

portato, legato, staccato

♩ = 108

### Des - Dur



### Ges - Dur



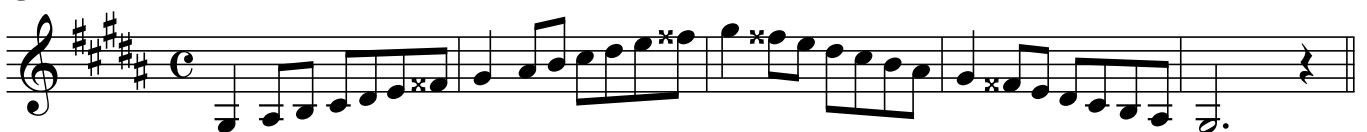
### Ces - Dur



### cis - Moll



### gis - Moll





# JMLA Silber - Tonleitern

## Tenorhorn (fis - b<sup>2</sup>)

portato, legato, staccato

♩ = 108

gis - Moll

dis - Moll

ais - Moll



# JMLA Silber - Tonleitern

## Tenorhorn (fis - b<sup>2</sup>)

portato, legato, staccato

♩ = 108

f - Moll

b - Moll

es - Moll



# JMLA Silber - Tonleitern

## Tenorhorn (fis - b<sup>2</sup>)

portato, legato, staccato

♩ = 108

as - Moll

chromatische Skala